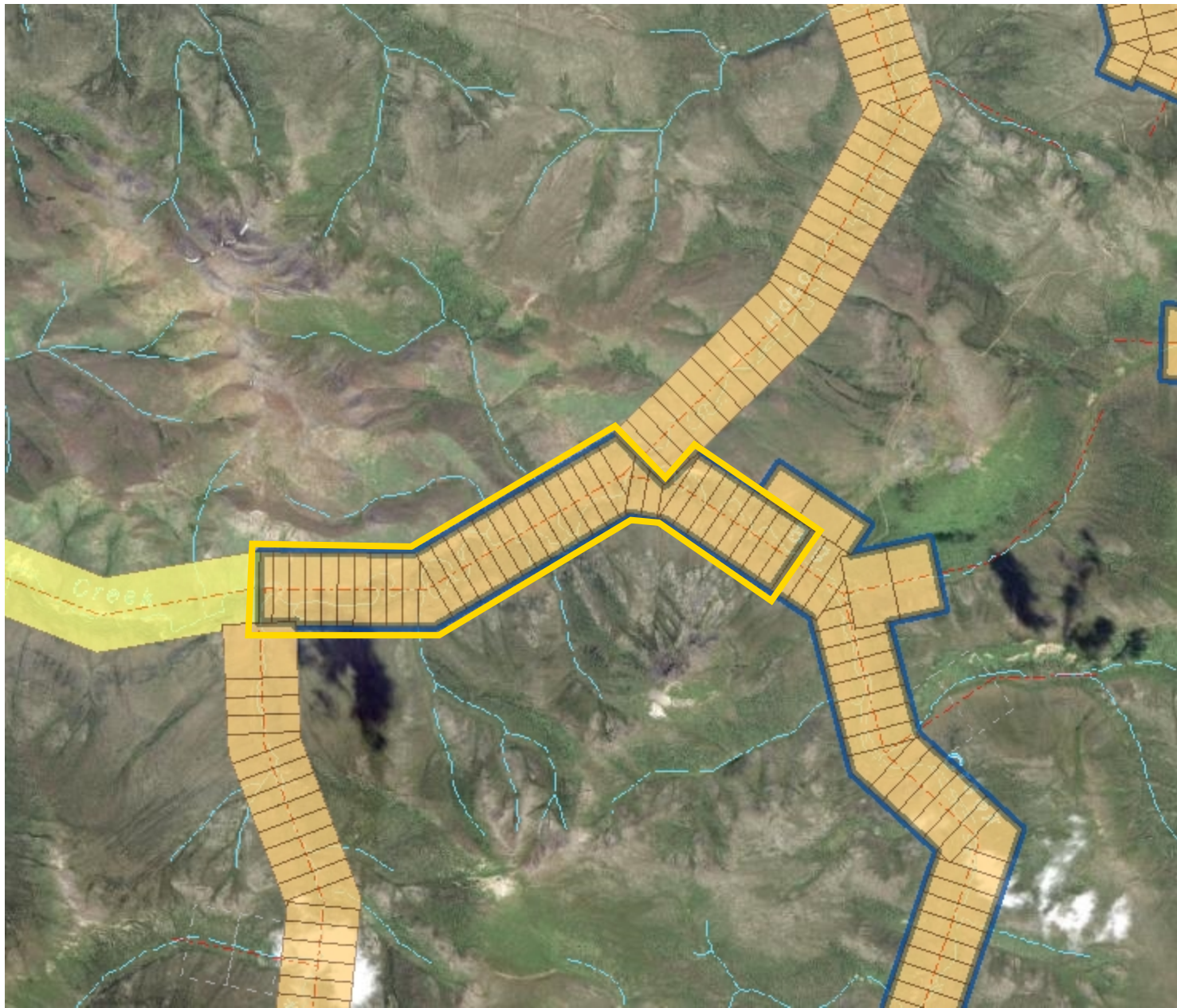


Big Creek: "Oz2"

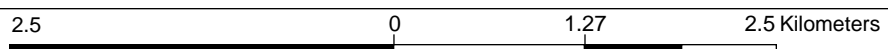


Legend

- Current Class 1 Notifications
- Areas defined by OIC
- First Nation Surveyed Lands - Category A & B
- First Nation Unsurveyed Lands - Category A & B
- Placer Claims (50K)
 - Active and Pending
 - Expired
- Prospecting Leases
 - Active and Pending
 - Expired
- Adjoin Placer
- Placer Mining Land Use Permit
 - Class 3
 - Class 4
- Placer Baselines (50K)
 - Placer Baselines (50K)
 - Placer Baselines (surveyed)
- Surveyed Mineral Claims
- Areas withdrawn from staking mineral claims
- Settlement Lands (Surveyed)
 - A: Surface and Subsurface Right
 - B: Surface Rights
 - FS: Fee Simple
 - 4.1.1 Retained Reserve
- Settlement Lands (Unsurveyed)
 - A: Surface and Subsurface Right
 - B: Surface Rights
 - FS: Fee Simple
- Interim Protected Lands (Unsurveyed)
- Current Class 1 Notifications
- Areas defined by OIC
- First Nation Surveyed Lands - Category A & B
- First Nation Unsurveyed Lands - Category A & B
- Placer Claims (50K)
 - Active and Pending
 - Expired
- Prospecting Leases
 - Active and Pending
 - Expired
- Adjoin Placer
- Placer Mining Land Use Permit
 - Class 3
 - Class 4
- Placer Baselines (50K)
 - Placer Baselines (50K)
 - Placer Baselines (surveyed)



Notes
Yukon Exploration Green Gold Inc



Yukon Albers
Produced from: Yukon Mining Viewer

1: 50,000

This map is a user generated static output from an Internet mapping site and is for reference only. Data layers that appear on this map may or may not be accurate, current, or otherwise reliable. THIS MAP IS NOT TO BE USED FOR NAVIGATION.
Date Printed: 08-Sep-2017